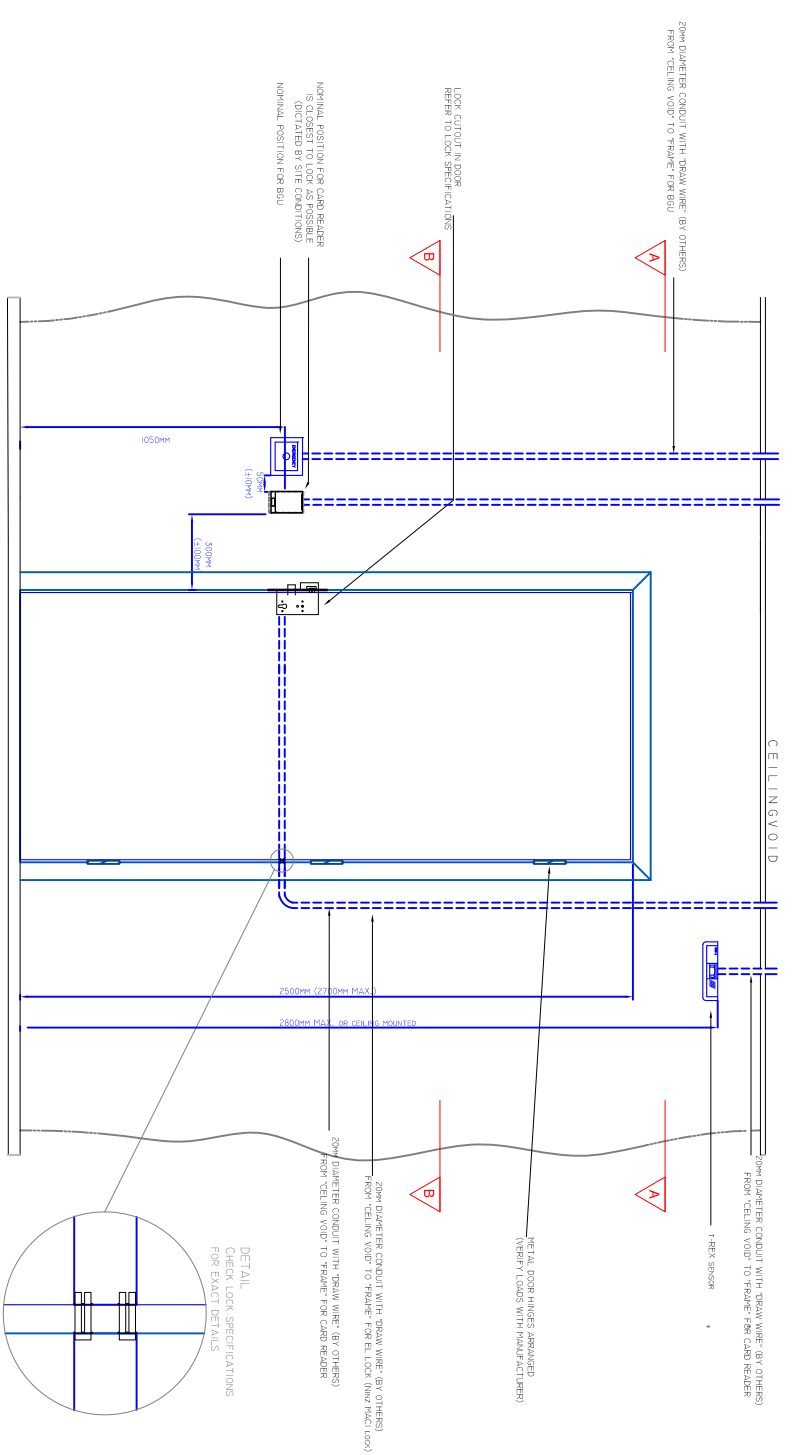


# NINZ MAC1 LOCK

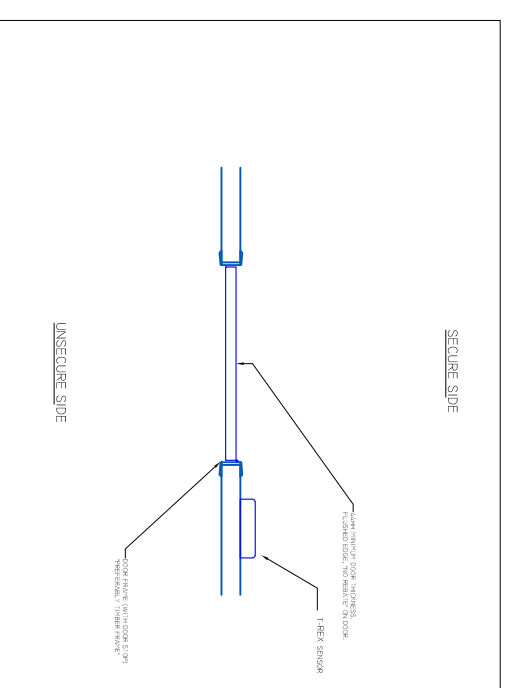
## ELEVATION DETAIL SINGLE DOOR TYPE

DOOR - ELECTRIC LOCK (WIRED FROM ABOVE)

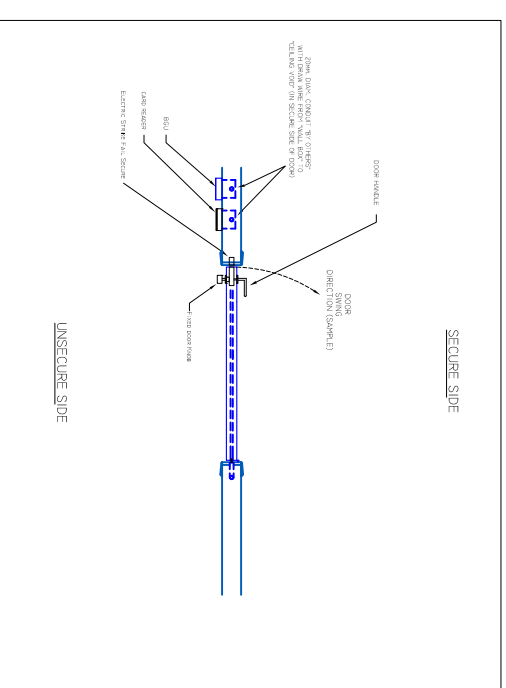
Optional:  
CARD READER - BQU - REX  
Mirror setup if doorlock is on the right side.



SECTION VIEW A - A



SECTION VIEW B - B



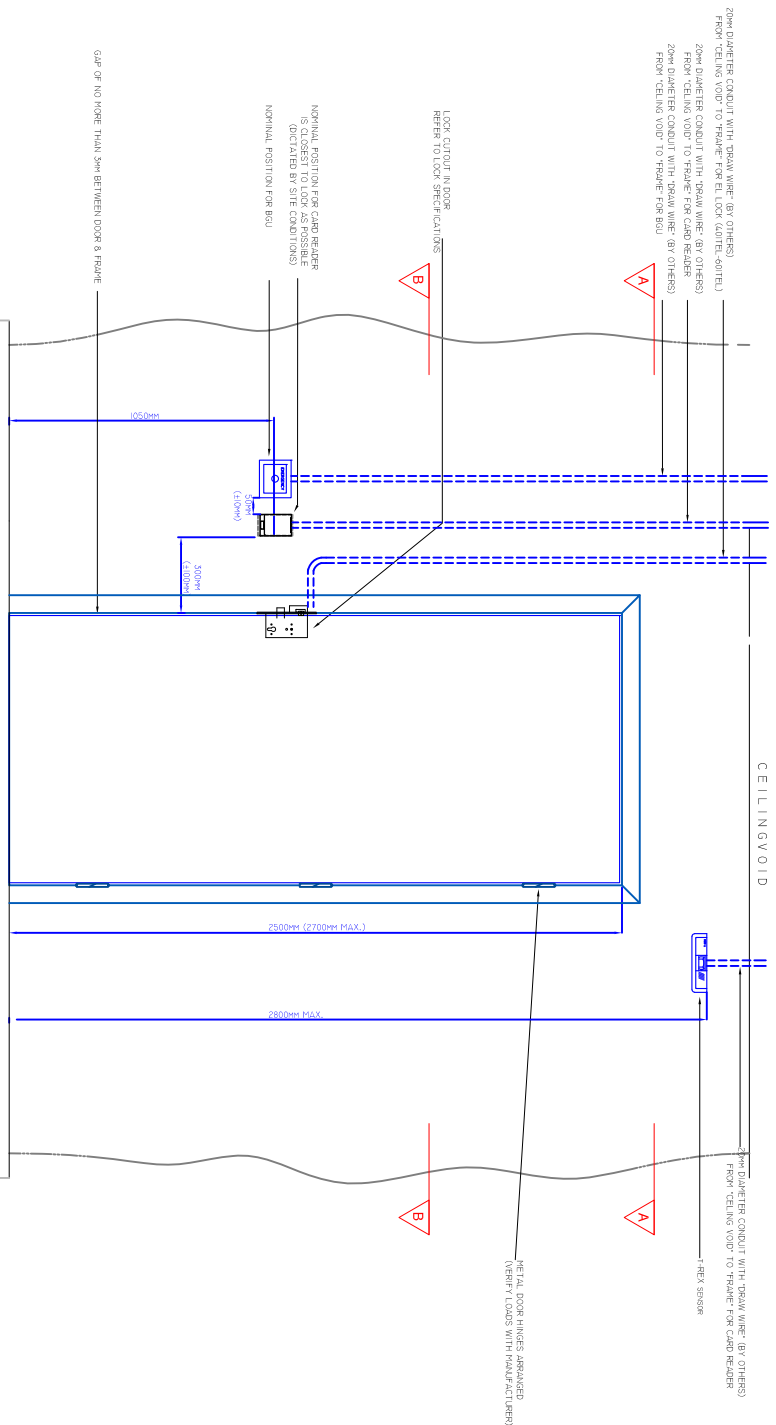
# Antipanic type: 401/TEL - 601/TEL

## ELEVATION DETAIL SINGLE DOOR TYPE

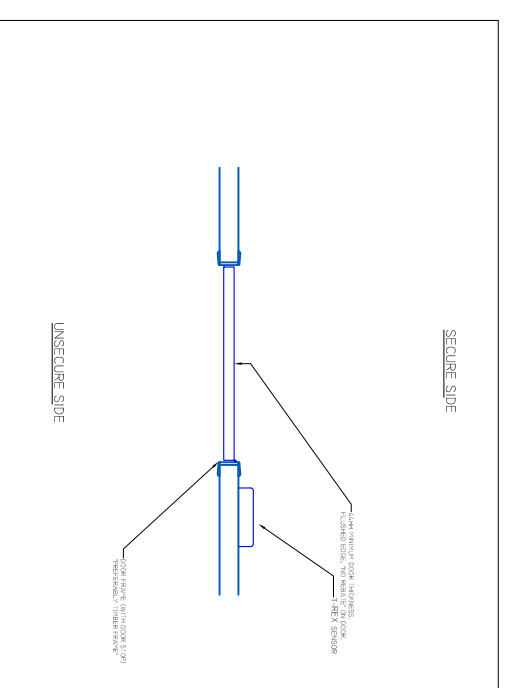
DOOR - ELECTRIC LOCK (WIRED FROM ABOVE)

CARD READER - BQU - REX  
Mirror setup when door lock is on the right side

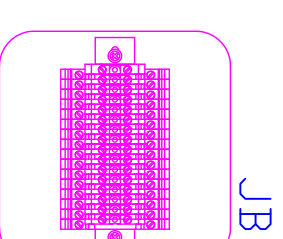
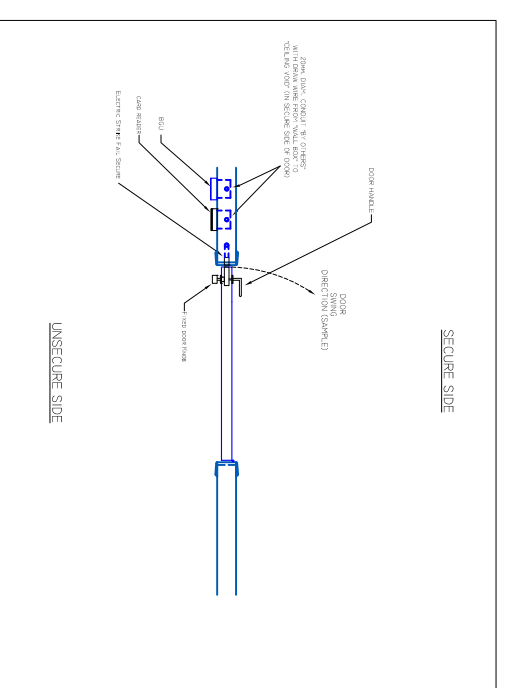
Callout (only in REX)



SECTION VIEW A - A

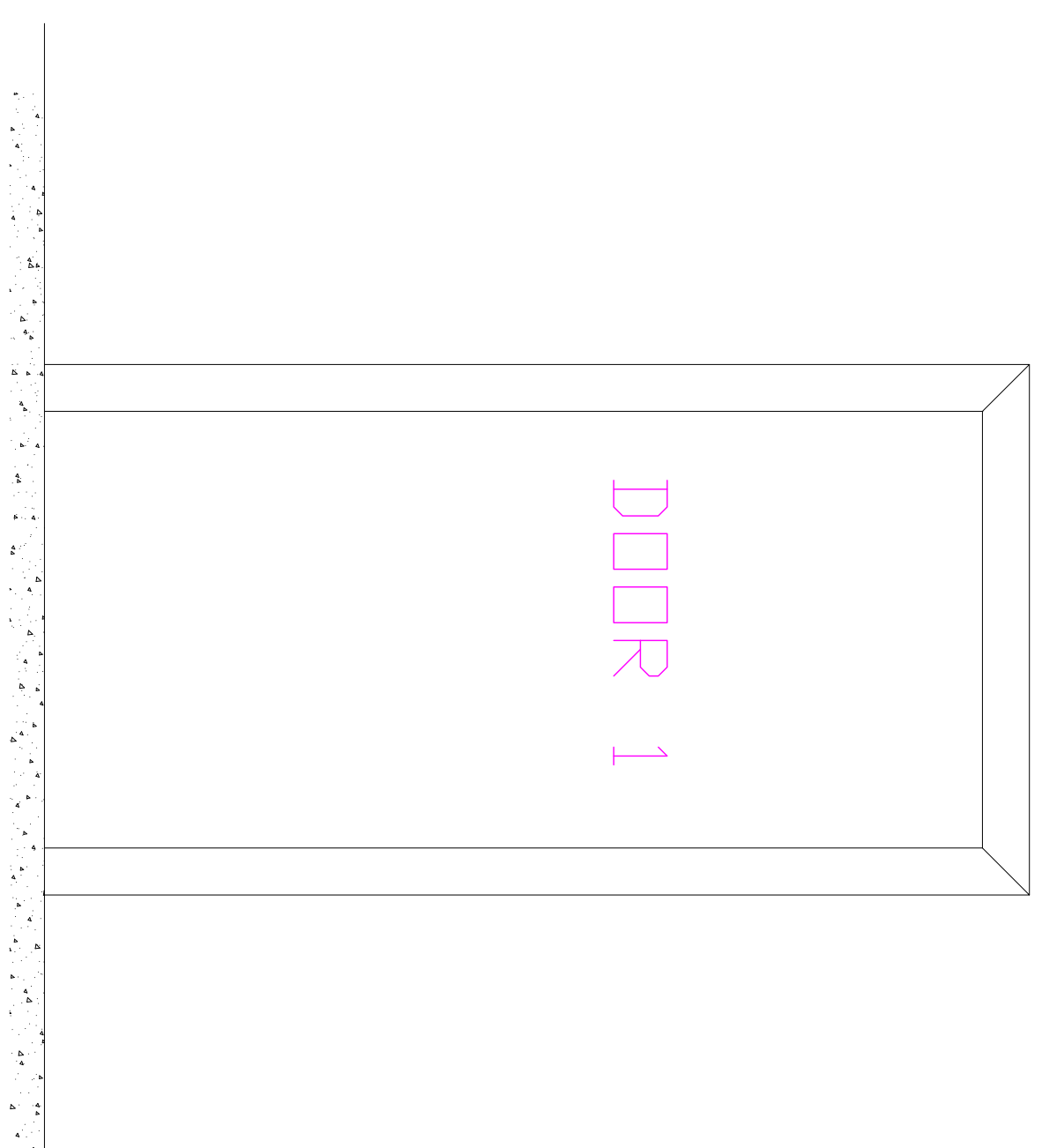


SECTION VIEW B - B



6x0,22cy (LSZH)

TREX



### REVISIONS

| DATE:    | DETAILS:     |
|----------|--------------|
| 05-03-19 | design setup |



SIG, Security Integrators Group B.V.  
 Albert Vermeijstraat 46  
 2202 NP Noordwijk, Netherlands  
 Tel: +31 (0) 71 7600 745 Email: info@sigema.com

All inventions, ideas, designs and methods herein are reserved to SIGEMEA and may not be used, altered, reproduced, or distributed without its written consent and permission.

CUSTOMER:  
**Zalando Verona**  
 Ninz Mac1 lock  
 Antipanic 401/TEL - 601/TEL lock

TITLE:  
**Door detail**  
**Cable schematic**

DESIGNED BY **BN** DRAWN BY **BN** CHECKED BY **DH**

DATE: **05-03-19** SCALE: **N.T.S.**

DRAWING NO: **1** REV: **0**