

MAXPRO® Cloud Appliance

HYBRID VIDEO APPLIANCE

Honeywell's MAXPRO® Cloud hosted video service features the cloud-ready hybrid video appliance that lets users view live and recorded video over the Internet using a PC, Mac, tablet or smartphone. It is ideal for entry into IP video surveillance systems and offers a new source of RMR opportunities for dealers through hosted video services.

The MAXPRO Cloud appliance can accommodate both analog and digital cameras and records a maximum of eight channels, including up to four Power over Ethernet IP cameras. This superior flexibility makes it easy and affordable to transition to high quality digital video. MAXPRO Cloud is ideal for end users who want to protect their existing investment in analog but want the ability to upgrade to IP, and also for customers who are starting out with video surveillance and are looking for an affordable entry-level IP system.

With auto camera detection and a built-in network switch, the MAXPRO Cloud appliance is designed for fast and easy onsite deployment, which reduces installation time. Installation and setup is made easy with our unique MAXPRO® Connect feature, which links the unit quickly to our state-of-the-art hosting center. And MAXPRO Cloud's configuration webpage provides a quick and intuitive configuration of event triggers and user parameters for each camera.

The web-based interface is viewable from any standard Mac or PC browser and requires no software to be downloaded. The interface is simple and intuitive with all the functionality and features that customers need, such as live view and playback of recorded video, one-click simple search of events, advanced search, and easy snapshot and clip creation.

The MAXPRO Cloud appliance utilizes RTSP and HTTP video streaming for high quality video while minimizing network bandwidth utilization. Critical events can be captured locally at higher resolution and frame rates and are easily retrieved. Event triggers can be via contacts, during scheduled recording times, or via built-in object detection. The arm and disarm feature also allows MAXPRO Cloud to be active only when your alarm panel or access control system is armed.

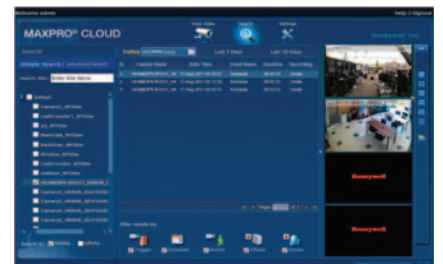
The MAXPRO Cloud appliance features our Active Alert® analytics to offer SmartVMD (video motion detection), reducing false alarms and monitoring operation costs.

Market Opportunities

MAXPRO Cloud is ideal for retail outlets, multi-location businesses, franchises, restaurants, small and medium-sized commercial businesses, small education/day care/dance facilities, temporary sites requiring quick deployment, construction sites, warehouses and storage facilities. It's also perfect for retrofit of existing analog sites.

Key Benefits

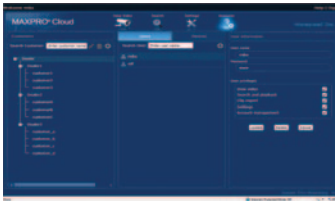
- Makes the transition to IP easy and affordable
- Cloud-ready system saves you time – allows you to view and manage live or stored video events from any location via the Internet
- Reduces installation and training costs by not having to install and maintain onsite client software
- Fast and easy deployment – reduces need for IT expertise
- Provides opportunities for RMR through value added hosted video services
- Expandable – additional video storage is available by adding off-the-shelf USB plug-in storage or NAS storage



FEATURES

Hardware

- Hybrid support for up to a combined total of 8 channels of analog/IP cameras
- IP camera support for up to a maximum of 8 high definition IP cameras
- Recording rates at CIF resolution: 120 ips global (NTSC/PAL)
- Up to 720p recording and/or viewing resolution (IP only)
- Live viewing and playback using web interface
- 8 BNC analog video inputs
- 4 IP PoE inputs
- 8 alarm inputs, 2 control outputs, 1 arm/disarm
- Embedded 4 GB solid state drive
- LINUX – secure, stable multi-tasking real-time OS
- Built in network switch
- Front panel LED data indicators
- 19" rack mountable or wall mountable



Web Interface: Account Management

- Securely access your customer accounts from anywhere
- Easily manage your customer sites and requests remotely
- Add new sites, users, passwords and user privileges
- Turn user services and access on and off as required
- Search customers and locations quickly and easily
- Access device information quickly for servicing and repair



Web Interface: View Video, Live and Recorded

- View from anywhere via standard web browser
- Display and access multiple sites automatically based on user privilege
- Drag and drop cameras into viewing windows
- View live video – display a single camera or quad view with different salvos
- Easy one-click search/review of recorded events/clips
- Easy capture and export of snapshots and video clips
- Remote export of onsite recording clips to USB
- Review evidence clips using any standard video players
- Accessible behind a firewall or corporate network
- Alarm notification via e-mail quick link feature and review of events
- Secure HTTPS login
- User privilege-based access



Web Interface: Appliance Configuration

- MAXPRO Connect to hosting site with LED notification of secure connection
- Network discoverable or direct laptop connection and configuration
- Connect and configure remotely to diagnose customer issues
- Auto discovery of MAXPRO Cloud unit via Bonjour plug-in for IE
- Easy quick onsite configuration of all settings
- Secure password protection
- Live view camera setup and configuration, auto discovery of connected cameras
- Simple and easy SmartVMD analytics setup
- Set up schedules, triggers and recording options

SPECIFICATIONS

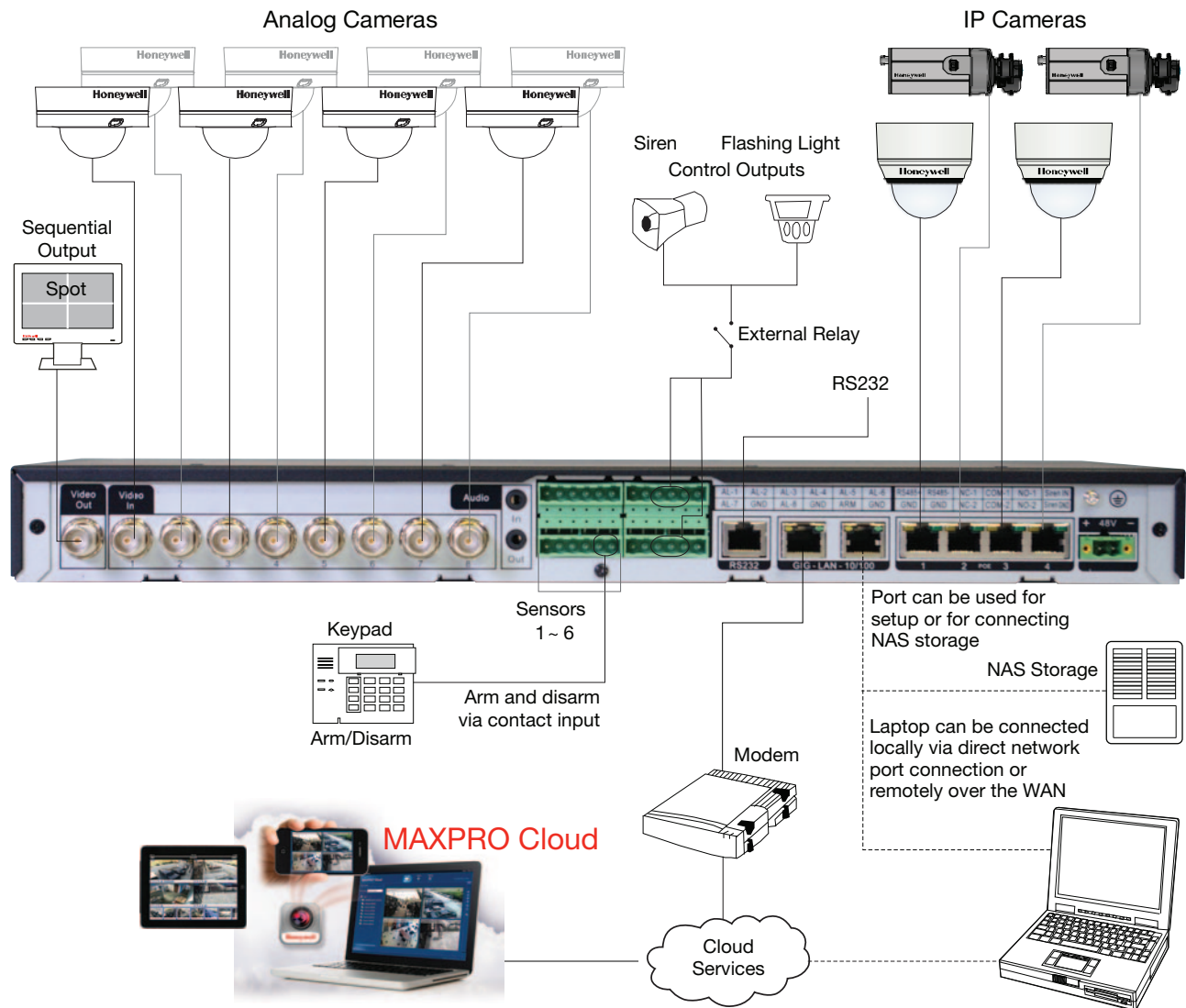
Web Interface – Dependent on end user premise bandwidth	
Total number of video stream supported per unit	32
Users retrieving video, reviewing alarms and events, playback of video using web interface	24 (HTTP)
Continual video streams per unit – offsite recording streams	8 (RTSP)
Specifications	
Video Standard	NTSC/EIA or PAL/CCIR
Video Format Analog	320x240 (NTSC) (CIF)
	384x288 (PAL) (CIF)
Video Format IP	320x180, 640x360, 800x450, 1280x720
Recording and Transmission Compression Algorithm	H.264, MPEG-4
Record Mode	(FIFO) Continuous buffer event based/continual based
Recording Capacity	4 GB Internal Storage, up to 1 TB USB Plug in Storage up to 4 TB NAS Storage
Recording Rate On Site	120 CIF global (NTSC/PAL)
Video Quality Settings	1-3 (Good – Best)
Smart Video Motion Detection (SmartVMD)	Up to 4 channels (analog only)
Event Recording and Reporting	Pre-and Post-Alarm, SMTP Notification, Inputs, Outputs, Video Loss, Motion, USB Disconnect
MAXPRO Connect	Auto connect to hosting site/auto registration dynamic IP resolution UPnP support – auto port forwarding
Network Attached Storage	Supports NFS, standard mounting options
USB 2.0 Ports	1 USB front

Rear Panel Connections	
Video Input (Analog)	8 BNC 1.0 – Vp-p @ 75 Ohms
Video Input IP	4 PoE IP video inputs (auto detect)
Video Output	1 – Spot or switcher, BNC 1.0 – Vp-p @ 75 Ohms
Alarm/Control Inputs	8-3.3 V tolerant User-configurable NO, NC 3.5 mm terminal block
General Purpose Control Outputs	2-12 V open collector TTL @ +15 mA/-100 mA 12V @ -100 mA current sink 3.5 mm terminal block
Arm/Disarm	-1 3.3 V tolerant
Serial Port RS232	1 – RJ45
Networking Ports	1x 100/1000 base T Ethernet, 1x 10/100 base T Ethernet, standard RJ45 Interface
Electrical	
Input Voltage	100-240 VAC, 60/50 Hz
Operating Voltage	48 VAC auto-sensing
Power Consumption	30W (analog cameras only)
Mechanical	
Dimensions (W x H x D)	17.42" x 1.72" (1U) x 8.06" (Inc. BNCs) (442.50 mm x 43.75 mm x 204.83 mm)
	19.00" x 1.72" (1U) x 8.06" (including mounting ears) (482.6 mm x 43.75 mm x 204.83 mm)
Weight	Without packaging – 3.2Kgs/7.05 lbs With packaging – 4.12Kgs/9.1 lbs
Construction	Housing: Steel chassis Finish: Black matte paint
Mounting Option	4 mounting ears for rack or wall mount included
Environmental	
Temperature	Operating: 14°F to 131°F (-10°C to +55°C)
	Storage: 14°F to 158°F (-10°C to 70°C)
Relative Humidity	Operating: 0%-93%, non-condensing
Regulatory	
Emissions	FCC: Part 15, Class B CE: EN 61000-6-3 CE: EN 61000-3-2
Immunity	CE: EN 50130-4
Safety U.S. and Canada International	ETL Listed to: UL 60950-1 IEC 60950-1
Warranty	5 years
Security	
Protocol	HTTPS secure login

MAXPRO® Cloud Appliance

www.maxprocloud.com

SYSTEM DIAGRAM

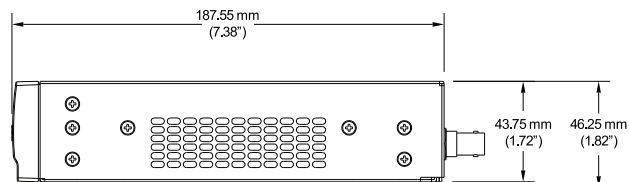
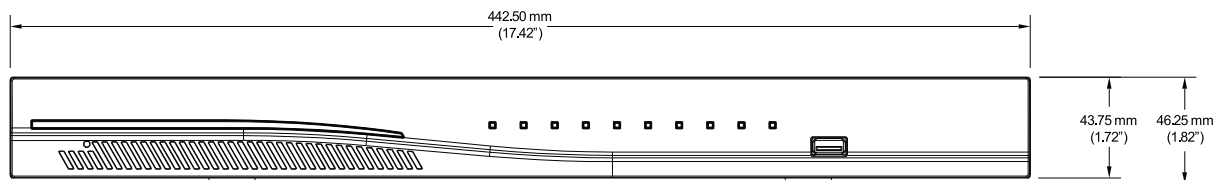
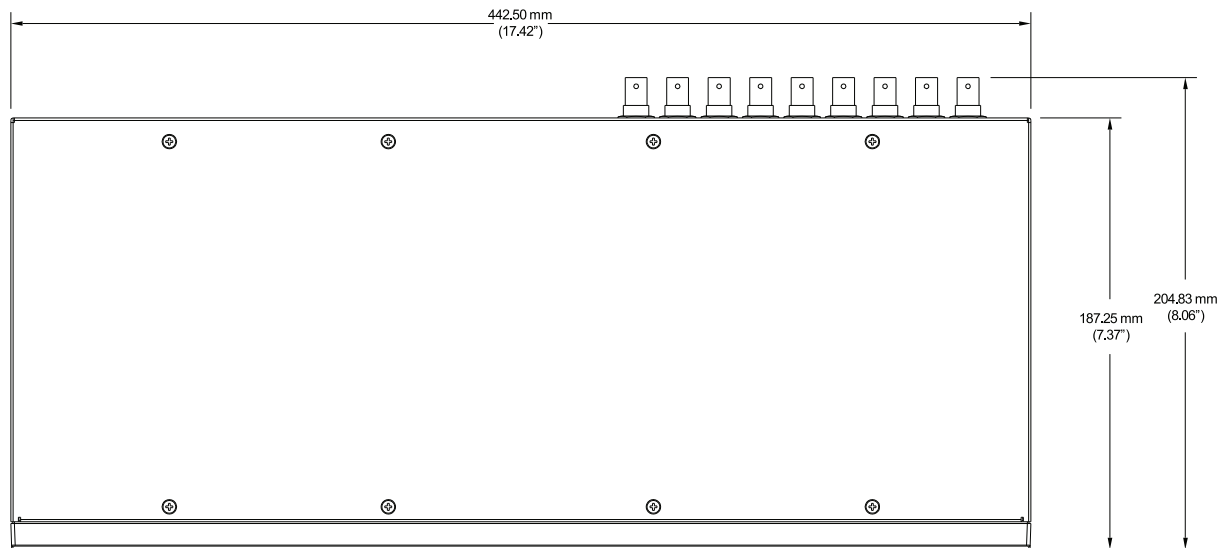
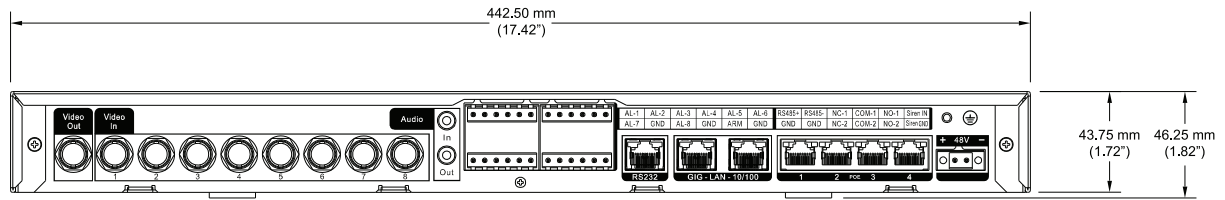


Front Panel LED	Indication
NET	Red LED - Turns ON if the unit fails to connect/register to remote server (MAXPRO Connect)
ALARM	Blue LED - During power up the LED will be blinking, once the unit starts the application the LED will be turned ON until the application stabilizes, once the app stabilizes LED will be turned OFF
CH 1-8	Green LED - Indicates video present on logical channels 1-8

MAXPRO® Cloud Appliance

www.maxprocloud.com

SYSTEM DIMENSIONS



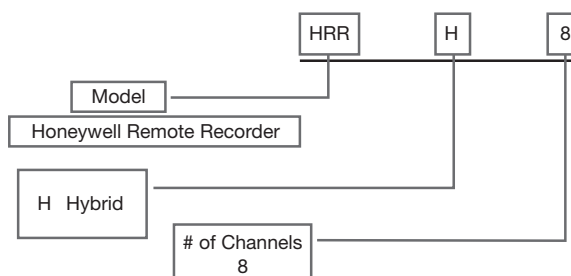
MAXPRO® Cloud Appliance

www.maxprocloud.com

ORDERING AND STORAGE INFORMATION

MAXPRO Cloud Appliance	
MAXPRO Cloud Appliance	HRRH8
Cameras Supported	
equiP® v2 Series Network Cameras	HD554IP, HD4DIP, HD4MDIP, HD3MDIP
H.264 IP	HCD5MIH, HD3MDIH, HD4MDIH
Performance Series Cameras	HD44IP, HD44IPX, HD45IP, HD54IP, HD55IP

NOTE: For PAL part #s add "X" to the end of the model numbers above.



Local Storage Options

Local Storage Calculations – CIF, 15 fps CONTINUOUS RECORDING						
Hard Disk Size	Analog Cameras (8) H.264		IP Cameras (8) MPEG-4		Analog/IP (4/4) H.264/MPEG-4	
	Low (128 Kbps)	High (512 Kbps)	Low (256 Kbps)	High (768 Kbps)	Low (128-256)	High (512-768)
Recording time	Hrs	Hrs	Hrs	Hrs	Hrs	Hrs
(Internal) 4 GB SSD	9 hrs	2 hrs	4.5 hrs	1.5 hrs	6 hrs	1.5 hrs
(External) 500 GB	~ 45 days	~ 12 days	~ 23 days	~ 8 days	~ 30 days	~ 9 days
(External) 1 TB	~ 91 days	~ 24 days	~ 45 days	~ 15 days	~ 61 days	~ 18 days

NOTE: For event-based recording (pre-event – 30 sec, post-event – 120 sec), storage required will be one sixth of continuous recording (assuming 100 events/day).

Recording Capabilities of MAXPRO Cloud Appliance

IP or Analog	No. of Cameras	Onsite					Onsite Event Duration	
		RES	FPS	Quality			PRE	POST
Analog				Good	Better	Best		
	8	CIF	15	256 Kbps	512 Kbps	786 Kbps	30s	300s
		Onsite					Onsite Event Duration	
		RES	FPS	Quality			PRE	POST
IP				Good	Better	Best		
	8	CIF	12	256 Kbps	512 Kbps	1 Mbps	15s	300s
	8	VGA	8	512 Kbps	800 Kbps	1 Mbps	5s	300s
	8	4CIF	8	512 Kbps	800 Kbps	1 Mbps	5s	300s
	8	720P	3	800 Kbps	1 Mbps	1.5 Mbps	5s	300s

NOTE: Honeywell reserves the right, without notification, to make changes in product design or specifications.

For more information:

www.honeywellsystems.com

Automation and Control Solutions

Honeywell Systems
2700 Blankenbaker Pkwy, Suite 150
Louisville, KY 40299
1.800.796.2288
www.honeywell.com

Honeywell

L/MXPRCLD/D
April 2012
© 2012 Honeywell International Inc.