



Performance Series HREP2 4-, 8-, and 16-Channel DVR

Quick Start Guide

Document 800-15801 — Rev A — 10/2013

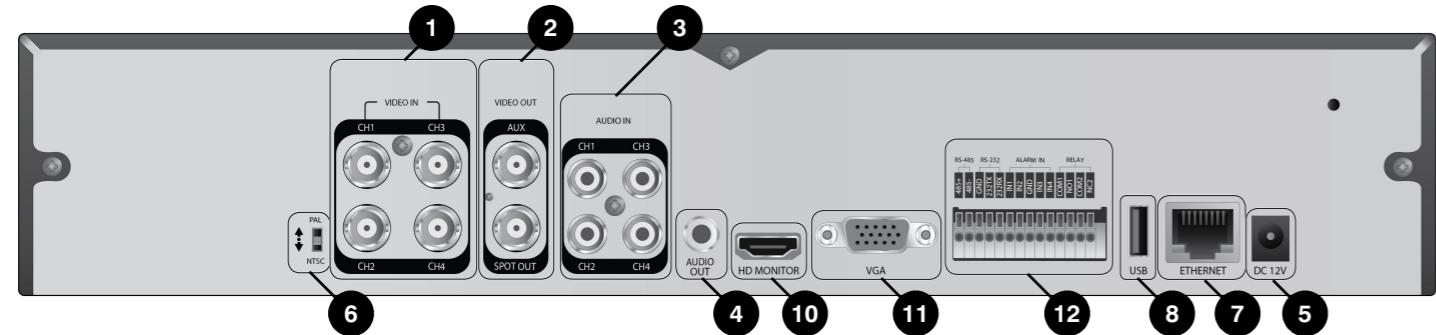
1 Installation

The Performance Series HREP2 DVRs come in three offerings:

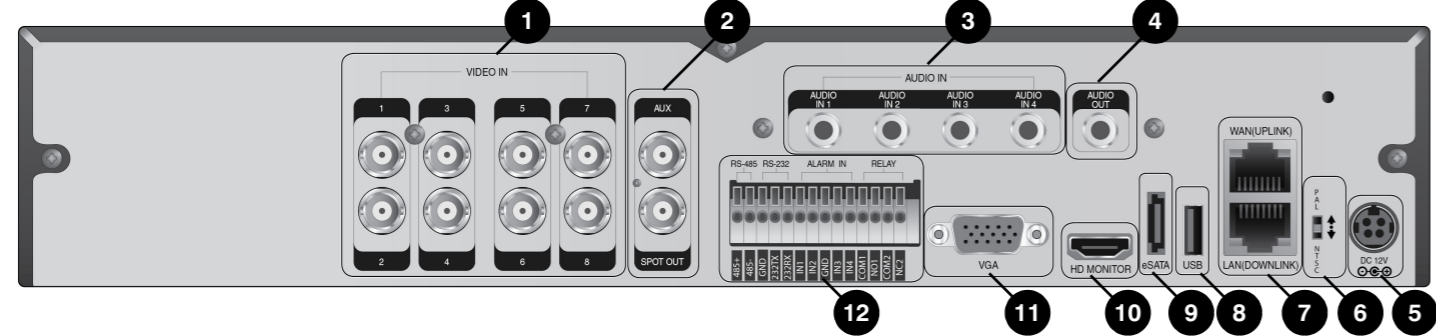
- HREP24, 4-channel Digital Video Recorder
- HREP28, 8-channel Digital Video Recorder
- HREP216, 16-channel Digital Video Recorder

Rear Panel Connections

HREP24, 4-channel DVR



HREP28, 8-channel DVR



HREP216, 16-channel DVR

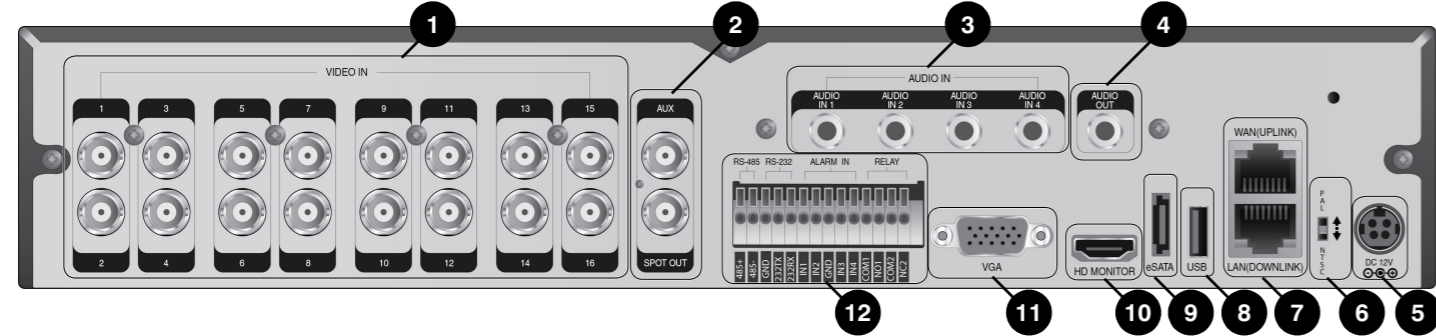
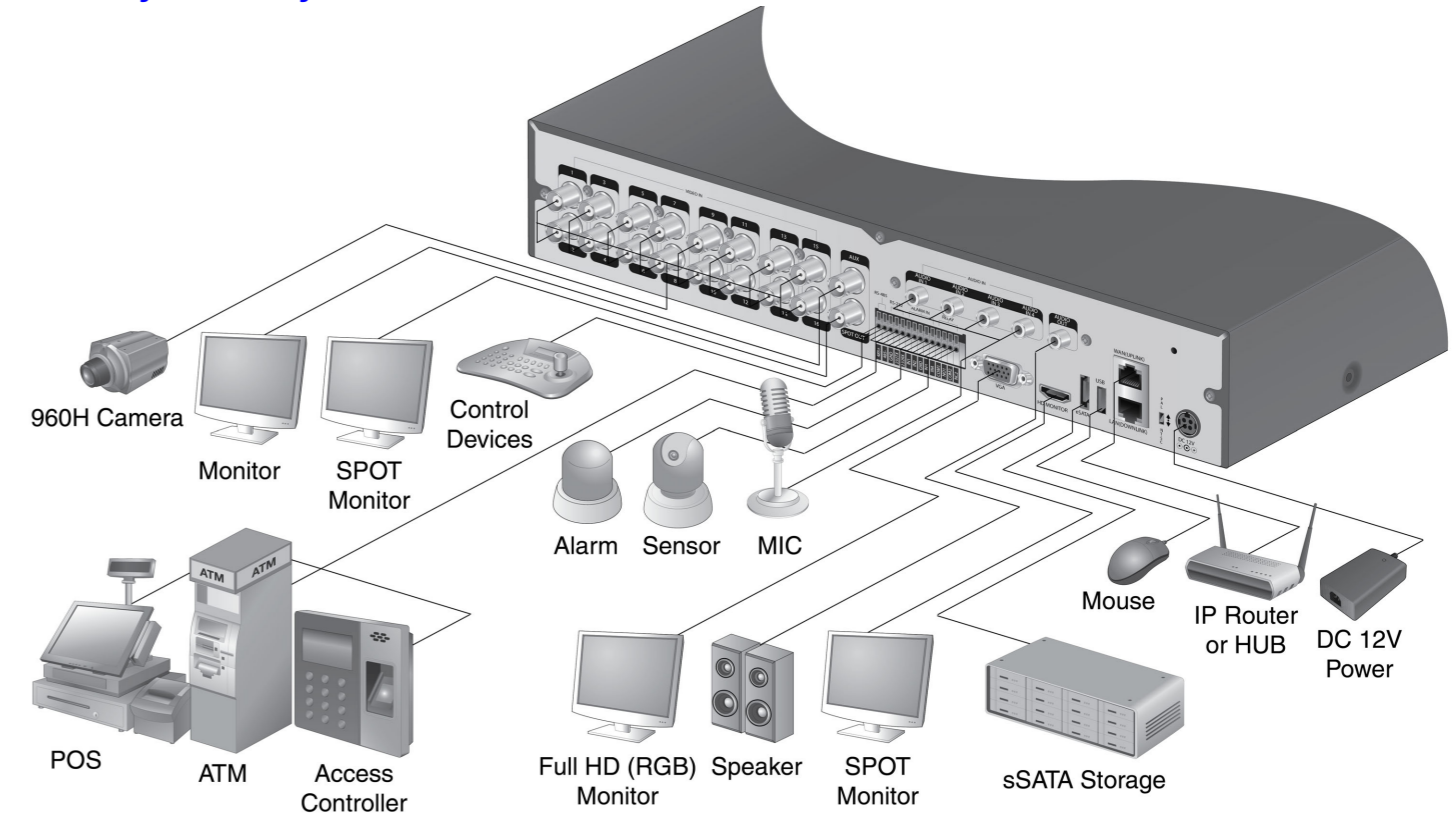


Table 1 Rear Panel Connections

No.	Name	Description	No.	Name	Description
1	VIDEO IN	Video input terminal for cameras.	8	USB	Used for connecting USB storage or mouse.
2	MONITOR	Monitor video output port.	9	eSATA	Connection port for external eSATA storage.
3	SPOT OUT	Exclusive port for SPOT output only (use HDMI cable to connect to an HD monitor).	10	HD-MONITOR	HD monitor video output port.
4	AUDIO IN	Port for audio input.	11	VGA	VGA monitor video output port.
5	AUDIO OUT	Port for speaker connection.	12	ALARM IN	Alarm input signal port
6	DC 12V	Power input port. Connect to a 12V adapter.		RELAY 1/2	Relay terminal output port.
7	DIP Switch	Switch to change unit's video standard between NTSC and PAL.		RS-485	Ports for communication with external devices such as PTZ camera and system keyboard.
	WAN(UPLINK)	Network port for connection to the Internet, router or hub.		RS-232	Connection ports for signal cables to external devices such as PTZ camera, POS and ATM devices.
	LAN(DOWNLINK)	Port for connecting the dedicated network device.			

Basic System Layout



Note Signal connection for POS and ATM is scheduled to be upgraded later.

CAUTION Since the cable quality may affect directly to the video quality depending on the distance between the camera and DVR, it is recommended to consult an authorized installer when installing the DVR.

2 Getting Started

Logging In

- When the system starts, the login screen appears.
- Select the user ID and enter the password.

The default user ID is **ADMIN**. The default password is **1234**.

- Click **OK**.

LOG IN

USER ID

ADMIN

PASSWORD

~1234567890- =

←

qwertyuio p{ } \

DEL

asdfghjkl. " ' ENTER

zxcvbnm < > ? SPACE

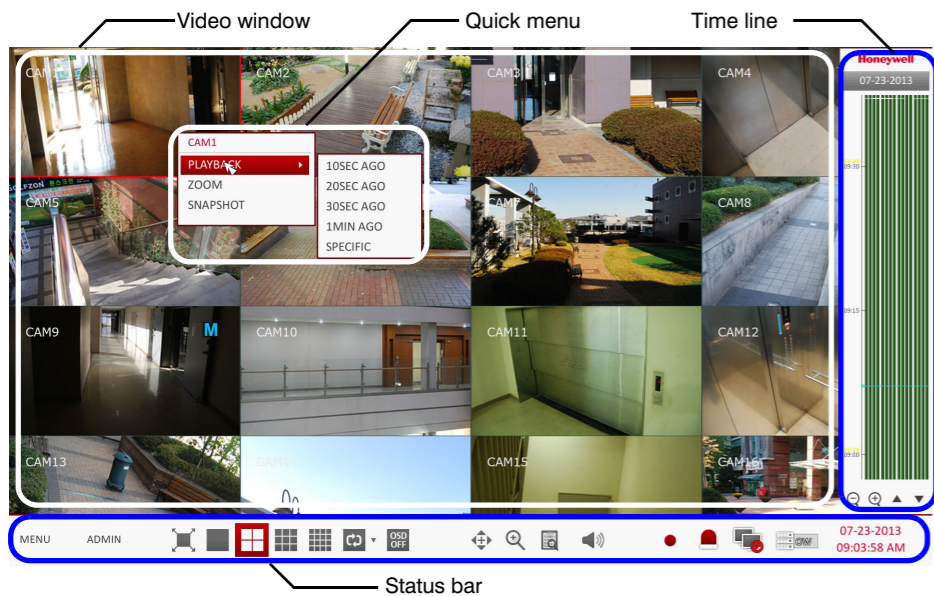
SHIFT

OK

CANCEL

CAUTION For safe and secure use of the product, change the password after purchasing.

Live Screen



Status Bar



Besides the remote control buttons, you can also use the status bar to control the DVR.

Table 2 Status Bar Descriptions

Item	Description
MENU	Select one of the System setup, Search and Backup menu items to access them.
ADMIN	Show the ID of the user who is currently logged in.
	Edit the screen layout to show video in full screen mode, or to show the video along with the status bar and timeline.
	Use these icons to select the split screen mode to view video with (choose from single, quad, 9-panel or 16-panel screens).

Table 2 Status Bar Descriptions (cont'd)

Item	Description
	Select Auto Sequence Mode. When a user arranges channels on desired tiles on a split screen view, this setting is listed for later selection. Selecting a screen setup directly switches the screen mode as configured.
	Display or hide the on-screen display (OSD) menus on the screen.
	Go to the PTZ screen. You can control the PTZ operations of a PTZ-compliant camera on the PTZ screen.
	Zoom in or out on the selected video image.
	Display the log list of recent recording events.
	You can use the camera supporting the audio input to listen to the audio.
	Start the emergency recording.
	Blinks when an event occurs. It will not blink if no action to the event has been set. Click to view information about the event that occurred.
	Check if the network connection is made through an external PC or mobile device. Click this to view the details of the concurrent users and to check the network connection status.
	Show the disk space information. If you have set the disk to overwrite mode, it will be displayed "OW" (Over Write) from the starting point of the overwriting.
07-23-2013 09:03:58 AM	Shows the current date and time.

Quick Menu

Table 3 Quick Menu Descriptions

Item	Description
Channel Number	Display the number of the currently displayed channel.
Play	Start playing the video of the selected channel from the specified time.
Zoom	Move to the digital zoom setting.
Snapshot Capture	Capture the current live video and save it in the JPEG format.

Note After capturing the image, you can save it to the hard drive or export it to an external USB memory device.

Timeline

Table 4 Timeline Element Descriptions

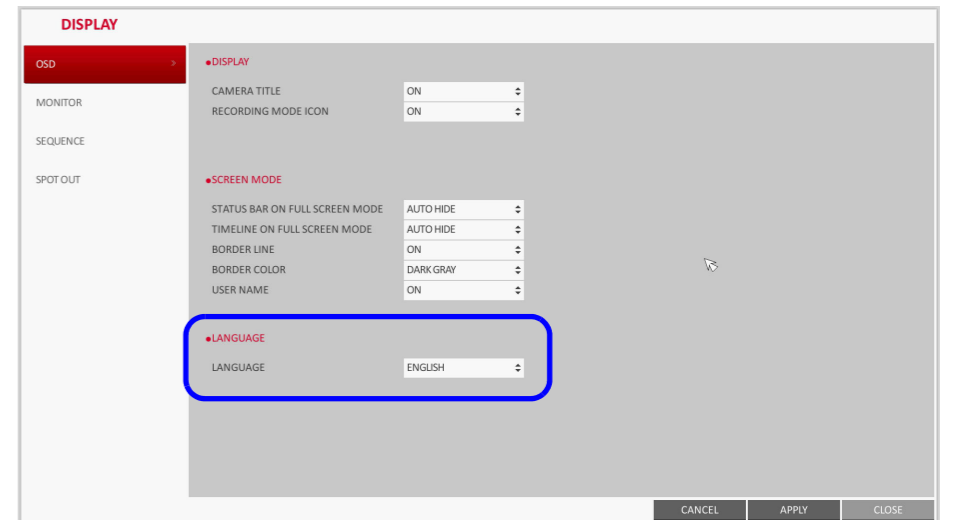
Item	Description
Timeline Date	07-23-2013 Display the date of the current timeline. Click this button to select a different date for the timeline.

Table 4 Timeline Element Descriptions (cont'd)

Item	Description
Zoom in/out of Timeline	Expand or collapse the timeline.
Navigation through Timeline	Move to the previous or next point of time in the timeline. You can also use the mouse wheel to navigate through the timeline.
Timeline Bar	Represents the recorded data. The color of each bar indicates: <ul style="list-style-type: none">Green: Continuous RecordingRed: Alarm RecordingBlue: Motion RecordingYellow: Panic Recording

Note Double-click the timeline to move to the Playback mode. Drag and drop it to make a backup or event search for the specified area.

Language Setting



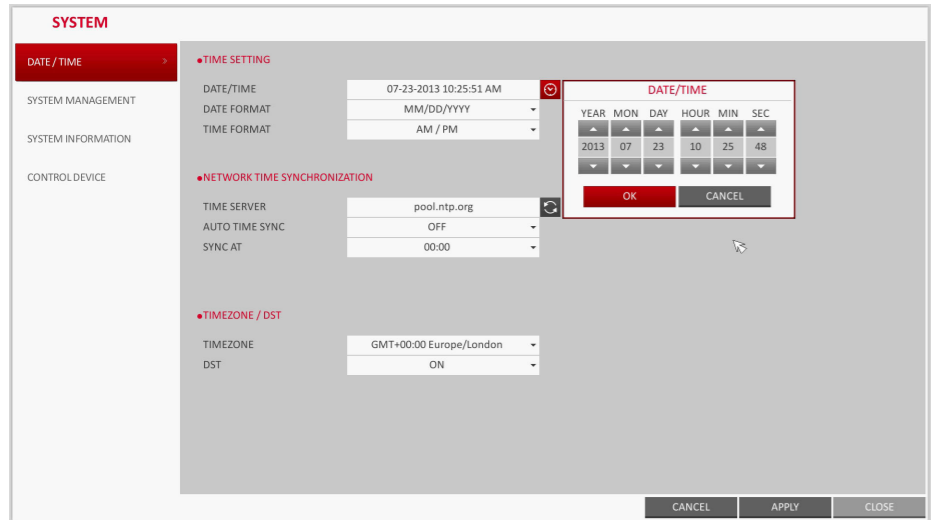
- Press **SETUP** on the remote control, or select **MENU > SYSTEM SETUP** from the status bar.
- From **SYSTEM SETUP > DISPLAY**, select **OSD**.
- Select a preferred language from the language drop-down list. Options are: English (default), French, Spanish, Italian, Dutch, German, Czech, Polish, and Russian.
- Click **APPLY**.

Date/Time Setting

- Press **SETUP** on the remote control, or select **MENU > SYSTEM SETUP** from the status bar.
- From **SYSTEM SETUP > SYSTEM**, select **DATE/TIME**.
- From this screen, you can specify the format that the current time and date will be displayed. You can also setup network time synchronization, the timezone and daylight savings time settings.

CAUTION As the existing data in the same time and date will be deleted if duplicates are found, back up the existing data for later use.

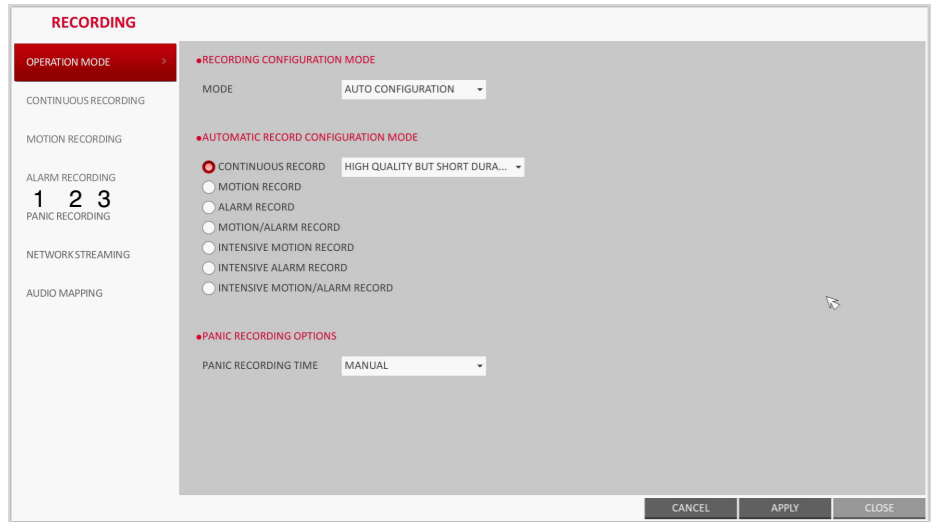
4. Click **APPLY**.



3 Recording

Automatic Recording Setting

- Press **MENU** on the remote control, and use the direction buttons to select **RECORD SETUP** and press **ENTER**.
Alternatively, you can select **MENU > RECORD SETUP** from the status bar.



- Set the **RECORDING CONFIGURATION MODE** to **AUTO CONFIGURATION**.
- Select an **AUTOMATIC RECORD CONFIGURATION MODE** from the following options:
 - CONTINUOUS RECORD - ALWAYS HIGH VIDEO QUALITY:** Recording will proceed in the best quality regardless of the event at all times.
As this option will always make recording in the best quality, the recording period is the shortest compared to the other record modes.
 - MOTION RECORD:** Recording will proceed only if motion is detected.
 - ALARM RECORD:** Recording will proceed only if an alarm event occurs.
 - MOTION/ALARM RECORD:** Recording will proceed only if motion is detected or an alarm event occurs.

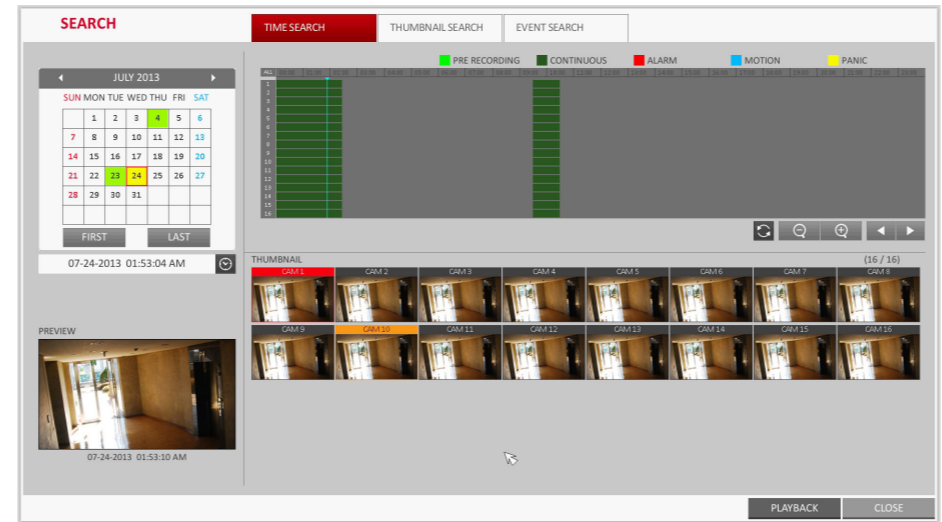
- INTENSIVE MOTION RECORD:** Normally recording will be performed in a low quality. However, the quality will switch to high if a motion is detected.
- INTENSIVE ALARM RECORD:** Normally recording will be performed in a low quality. However, the quality will switch to high if an alarm event occurs.
- INTENSIVE MOTION/ALARM RECORD:** Normally recording will be performed in a low quality. However, the quality will switch to high if an alarm event occurs or a motion is detected.

4. Click **APPLY**.

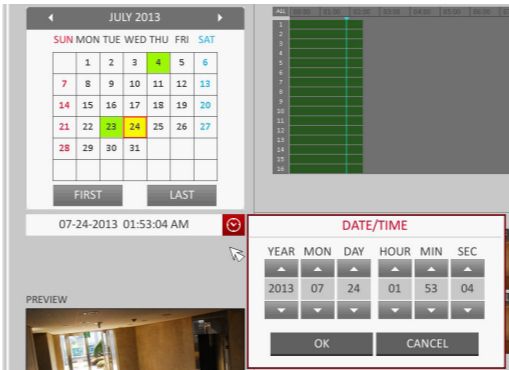
4 Searching

Time Search

- From the **SEARCH** menu, select **TIME SEARCH**.



- Specify the search date and time from the calendar in the left corner of the screen.
- You can identify the type of the recording data by the color in the bar:
 - Yellow Green (Pre Recording): The pre-recording is performed on the recording data after you set the **PRE RECORDING TIME** from **OPERATION MODE**.
 - Green (Continuous): The continuous recording is performed on the recording data.
 - Red (Alarm): The alarm event recording is performed on the recording data.
 - Blue (Motion): The motion event recording is performed on the recording data.
 - Yellow (Panic): The panic manual recording is performed on the recording data.
- Click to move to a desired start time in the time bar, or use the buttons at the bottom of the status bar to make a search.
- Select an item to play and click **PLAY**.

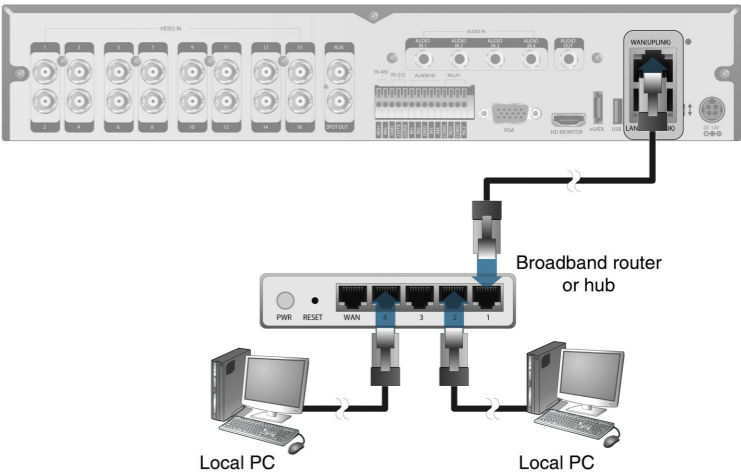


CAUTION Click to move to a desired time, or simply double-click a desired time in the time bar to play the video data on that time.

Note For details on thumbnail search and event search, refer to the user manual.

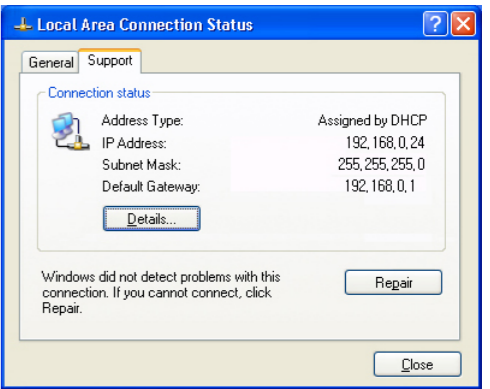
5 Network Setting

Network Connection



Setting the Network Connection

- Connect the **WAN(UPLINK)** port in the rear panel of the DVR to any port available except for the WAN port of the router.
- Connect the **WAN(UPLINK)** port of the router directly to the fixed IP LAN cable, or connect it to the xDSL modem.
- Check the network address information if using a network environment connected to the same router.
- Enter the network setting menu of the DVR and provide the IP address and other network settings (see [Configuring Network Settings on page 3](#)).



Configuring Network Settings

- From the main menu of the DVR, navigate to **SYSTEM SETUP > NETWORK > IP SETUP**.
- Uncheck the **DHCP** checkbox and provide the necessary information in the required fields.

- Check the network address information in the network environment settings and enter the correct information into the following fields:
 - IP ADDRESS:** (enter the IP address to use for the DVR).
 - GATEWAY:** 192.168.0.1 (enter the gateway address).
 - SUBNET MASK:** 255.255.255.0 (type the subnet mask).
 - 1ST, 2ND DNS SERVER:** 168.126.63.1 (enter the address of a DNS server).

- Note** Enter an IP address that falls in the private IP range provided by the router (for example: 192.168.1.2~254, 192.168.0.2~254, and so on).
- When done, configure the port forwarding for RTSP and Web Service ports by clicking **Port Forwarding**.
The default value of the Web service port is 8080.
 - Click **PORT FORWARDING** for each. You will see the confirmation message.
 - Click **APPLY** and exit the menu. The network settings of the DVR are complete.

Note Some router models may not support UPNP properly. If you see a failure message after configuring PORT FORWARDING settings, refer to the user manual of the router and configure the DMZ or port forwarding settings manually.

Continue Setting the Network Connection – DDNS

- When the network configuration is complete (see [Configuring Network Settings on page 3](#)), proceed with the DDNS settings to allow access to the DVR from outside.
From the main menu of the DVR, move to **SYSTEM SETUP > NETWORK > DDNS**.

- Rename the DVR. (The default name of the DVR is the MAC address of the DVR.)
Enter a desired name as a combination of characters and numbers.
- When done, click **DDNS REGISTRATION TEST** and **DDNS CONNECTION TEST** in this order.

If you receive a success message. Check the DVR address and click **APPLY** at the bottom of the screen.

- Check the DVR address and the Web service port in the network settings to make sure that any Internet-connected PC can access the DVR.
- If you type **mydvr** for the DVR name from the DDN item, the address of the Web viewer is **http://mydvr.dvrlink.net: 8080**.

Accessing the Web Viewer

- Open the browser and enter the IP address of DVR, or enter the URL address in the address bar.

For example, if you use the DDNS of the DVR:
http://00115f123456.dvrlink.net :8080

If you do use the IP address of the DVR:
http://192.168.0.210 : 8080

For more information about the router and network settings, refer to the user manual included with your unit.

- When the login dialog appears, enter the user name and password.

Note The default user name and password:

- User name: ADMIN
- Password: 1234

Be aware when you enter the user name whether it is upper or lower case.

- Click the upper warning bar to install the ActiveX before enabling the add-in function.

- When the security warning window appears, click **Install**.
- When the ActiveX is installed completely, you will see the live screen.

Note For more information about using the Web viewer, refer to the user manual.

6 Accessing the Mobile Viewer

Downloading and Accessing iOS-Specific Viewer

- From your iPhone or iPad, access the App store.
- From the lower menu bar, click the **Search** icon.

- Type HREP2 in the search bar.
- Select **HREP2** to install it.
- When the installation is finished, select **HREP2** again to run the program.

Downloading and Accessing Android-Specific Viewer

- From your smart phone, access the android market.
- From the top menu bar, click the **Search** icon.

- Type HREP2 in the search bar.
- Select **HREP2** to install it.
- Click **Accept & download** to install the viewer.
- You can run the remote viewer program after installation is complete.

Honeywell

www.honeywell.com/security
+1 800 323 4576 (North America only)
<https://www.honeywellsystems.com/ss/techsupp/index.html>

Document 800-15801 – Rev A – 10/2013

© 2013 Honeywell International Inc. All rights reserved. No part of this publication may be reproduced by any means without written permission from Honeywell. The information in this publication is believed to be accurate in all respects. However, Honeywell cannot assume responsibility for any consequences resulting from the use thereof. The information contained herein is subject to change without notice. Revisions or new editions to this publication may be issued to incorporate such changes.